

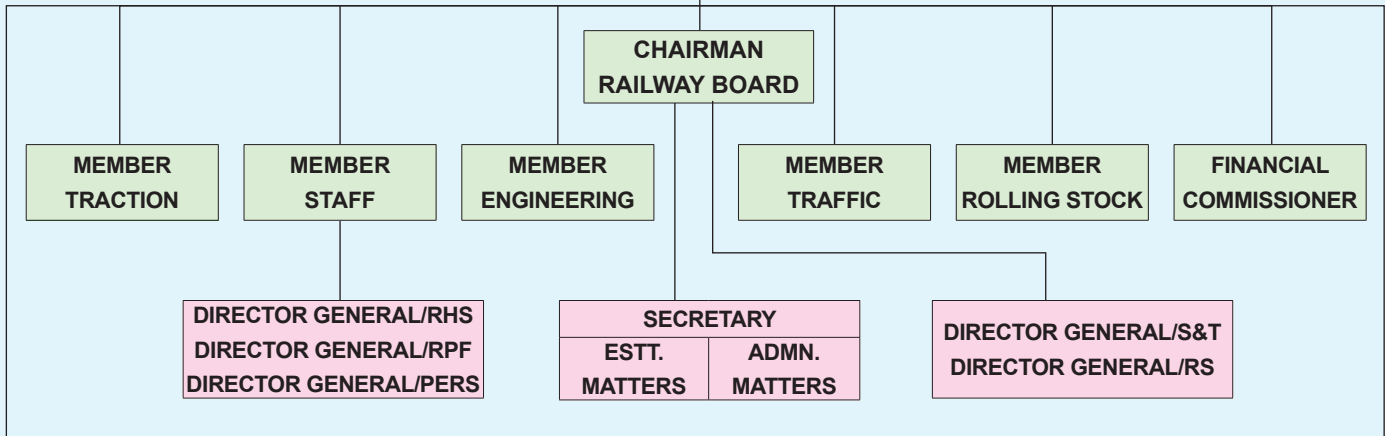
ORGANIZATION STRUCTURE

MINISTER OF RAILWAYS

MINISTER OF STATE FOR RAILWAYS (S)

MINISTER OF STATE FOR RAILWAYS (G)

RAILWAY BOARD



ZONAL RAILWAYS (OPEN LINE)

GENERAL MANAGERS
CENTRAL
EASTERN
EAST CENTRAL
EAST COAST
METRO **
NORTHERN
NORTH CENTRAL
NORTH EASTERN
NORTHEAST FRONTIER
NORTH WESTERN
SOUTHERN
SOUTH CENTRAL
SOUTH EASTERN
SOUTH EAST CENTRAL
SOUTH WESTERN
WESTERN
WEST CENTRAL

PRODUCTION UNITS

GENERAL MANAGERS
CHITTARANJAN LOCOMOTIVE WORKS
DIESEL LOCOMOTIVE WORKS, VARANASI
INTEGRAL COACH FACTORY, CHENNAI
RAIL COACH FACTORY, KAPURTHALA
RAIL WHEEL FACTORY, YELAHANKA
MODERN COACH FACTORY, RAE BARELI
CAO (R) *
DIESEL LOCO MODERNIZATION WORKS/PATIALA
RAIL WHEEL PLANT, BELA

OTHER UNITS

GENERAL MANAGERS
CENTRAL ORGANIZATION FOR RAILWAY ELECTRIFICATION
NF RAILWAY (CONSTRUCTION)
CAO (R) *
CENTRAL ORGANIZATION FOR MODERNISATION OF WORKSHOPS (COFMOW)
INDIAN RAILWAY ORGANIZATION FOR ALTERNATE FUELS (IROAF)
DIRECTOR GENERAL
NATIONAL ACADEMY OF INDIAN RAILWAYS, VADODARA
DG & EX-OFFICIO GM
RDSO, LUCKNOW

CPSE/CORP

BCL
BSCL
BWEL
CONCOR
DFCCIL
IRCON
IRCTC
IRFC
KMRCL
KRCL
MRVC
RCIL
BITES
RVNL
Autonomous Bodies/ Authorities
CRIS
RLDA

** METRO RLY, KOLKATA.

* CHIEF ADMINISTRATIVE OFFICER (RAILWAYS)